

Quick Installation Guide

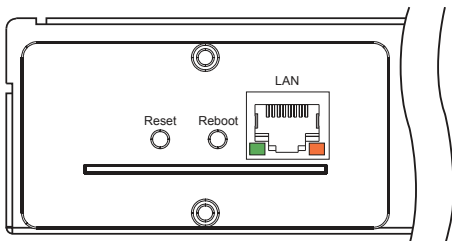
IKVM-210 Series

8/16-Port IP KVM Switch



1. Physical Introduction

Rear panel of the IP Module KVM Switch



Interface	Description
LAN Port	One 10/100/1000BASE-T RJ45 auto-MDI/MDI-X port.
Reboot	Press and release to restart the system.
Reset	Press for 5 seconds to reset to factory default.

2. System Requirements

PLANET IKVM Series provides an IPKVM utility to remotely control the server. The following are required for further management:

CPU	Intel Dual Core 2.0GHz or higher
RAM	2GB or above recommended
Video RAM	128MB or above recommended
Operating System	Windows XP/7/10
Video Resolution	800 x 600, 1024 x 768, 1280 x 720, 1280 x 800, 1280 x 1024, 1920 x 1080
Browser version	<ul style="list-style-type: none">■ IE10.0 or higher■ Firefox 48.0.2 or higher■ Google Chrome 23.0.1271.97m or higher



Note

1. The video resolution is based on the monitor and display card. Please select Full HD monitor and display card for IKVM Series.
2. The maximum video resolution of LCD is 1280 x 1024 with IKVM-210-08M/16M, so remote video solution only supports 1280 x 1024 or lower.

3. IPKVM Software Installation

Step 1. Insert the bundled CD disk into the CD-ROM drive to launch the autorun program. Once completed, a welcome screen will appear.

Click the **“Utility (IPKVM Software)”** button and the InstallShield Wizard dialog box will appear as shown below.

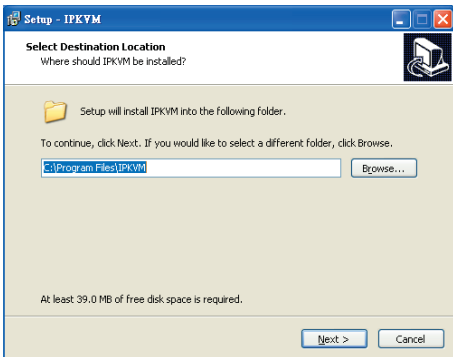


Note

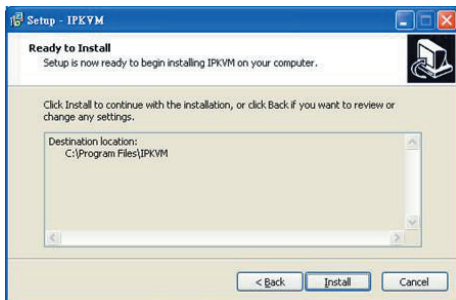
If the PC or workstation is not equipped with CD-ROM driver, please download the IPKVM software from the PLANET website.

<http://www.planet.com.tw/en/support/download.php?view=8184&key=IKVM-210#list>

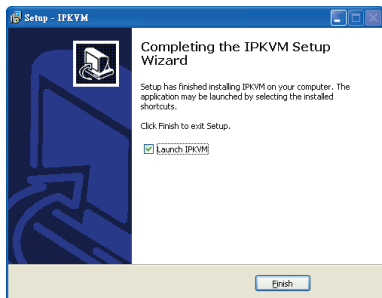
Step 2. Once the Setup program starts running, please click the **“Next”** button for starting installation.



Step 3. Click **“Install”** for starting installation.



Step 4. Click the **“Finish”** button for completing the IPKVM Setup.



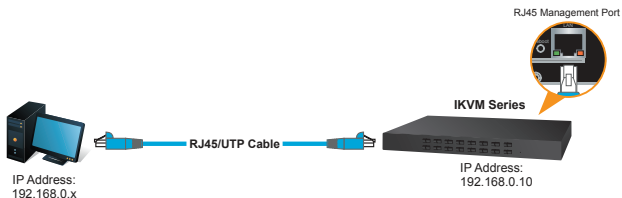
Note

Please do not disable the **Launch IPKVM**. The IKVM needs registry to initiate the IPKVM software to enable to remotely control PC.

4. Web Management

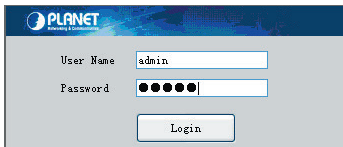
The following shows how to start up the **Web Management** of the IKVM-210 Series. Note the IKVM-210 Series is configured through an Ethernet connection.

Step 1. Connect manager PC to RJ45 LAN port to enable to remotely manage a PC. The default IP address of the IKVM-210 Series is **192.168.0.10**, then the manager PC should be set to **192.168.0.x** (where x is a number between 1 and 254, except 10), and the default subnet mask is 255.255.255.0.




Default DHCP Client	N/A
Default IP Address	192.168.0.10
Default Port	80
Default Login User Name	admin
Default Login Password	admin
Search Tools	PLANET Smart Discovery Lite


Step 2. Login the Web Management. The username and password are both **admin**.



The image shows the Planet Web Management login interface. It features the Planet logo at the top left. Below the logo, there are two input fields: "User Name" with the text "admin" entered, and "Password" with seven black dots. A "Login" button is positioned below the password field.

Step 3. Go to the Console and press  icon to enter the remote console.

Online Console

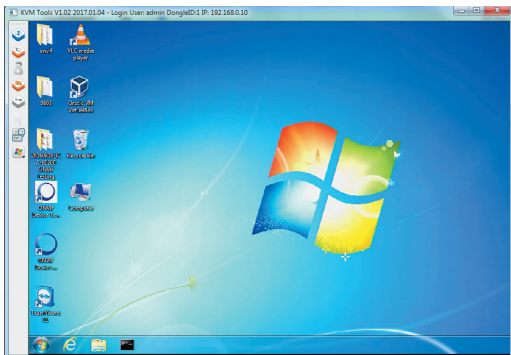
Modify	PortID	Name	Type	Group	UID	Status	Client	Position1	Position2	Department
	1	IPKM-210	usb		C:\USB\0000000000	idle				










Step 4. Link the IPKVM.exe

```
"C:\Program Files (x86)\IPKVM\IPKVM.exe" "%1"
```

Step 5. Show the console at desktop.



Parameters	Description
 <p>Full Screen</p>	<p>Press the Full Screen to make display in full screen.</p>
 <p>Align Mouse</p>	<p>After login, system will automatically calibrate mouse. If it fails, please click Align Mouse on the left to operate manually.</p> <div data-bbox="301 448 943 617" style="border: 1px solid black; padding: 5px;">  <p>Note</p> <p>A different OS has a different mouse setting. Please refer to the user manual for setting the mouse first.</p> </div>
 <p>Video Config</p>	<p>Adjusting display area of screen.</p>
 <p>Mouse Show</p>	<p>The mouse can appear or hide by clicking it.</p>
 <p>Set Key</p>	<p>Remote hot-key edit button -- hot-key operation can be added in the pop-up dialog with the button clicked.</p>
 <p>Show Key</p>	<p>Choose the remote shortcut key directly to operate the controlled machine.</p>

Further Information:

The above steps introduce the simple installation of the IKVM Switch. For further details on the installation of the IKVM Switch, please refer to the user manual which can be downloaded from the PLANET website.

<http://www.planet.com.tw/en/support/download.php?view=3&key=IKVM-210#list>



Please download the IPKVM software from the PLANET website.

<http://www.planet.com.tw/en/support/download.php?view=8184&key=IKVM-210#list>



If you have further questions, please contact the local dealer or distributor where you purchased this product or you can contact PLANET directly at the following email address: support@planet.com.tw

PLANET Technology Corp.

11F., No. 96, Minquan Rd., Xindian Dist., New Taipei City 231, Taiwan
2011-F00350-000

