




Quick Installation Guide

Thank you for purchasing PLANET ENW-9801 10Gbps SFP+ PCI Express Server Adapter. It supports x4 PCI Express interfaces. The ENW-9801 provides a highly cost-effective solution that can upgrade your existing Ethernet infrastructure to the 10 Gigabit network.

1. Package Contents

- 1 x ENW-9801 (with long profile bracket)
- 1 x Quick Installation Guide
- 1 x Low Profile Bracket

ENW-9801	Quick Installation Guide
	
Low Profile Bracket	
	

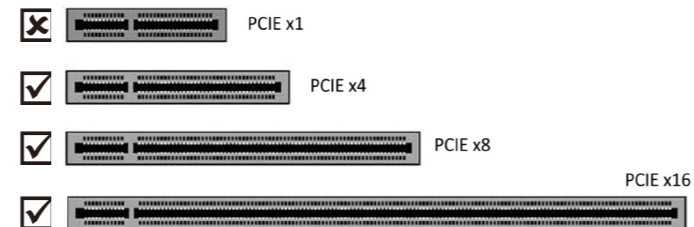
2. System Requirement

■ PCI-Express support

ENW-9801: The Server/Workstation supports PCI Express v2.0 (5GT/s) and PCI Express (PCIe) x4 interface.



Below are the different PCI Express Slots. The ENW-9801 is compatible with PCIe 2.0 x4 slots or larger.

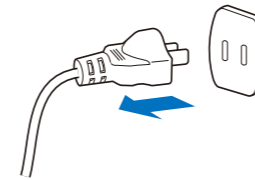


■ Operation System Support:

- Windows Server 2008R2 64 bits
- Windows Server 2012R2 64 bits
- Windows Server 2016R2 64 bits
- Windows Server 2019R2 64 bits
- Windows 7 32/64 bits
- Windows 8 32/64 bits
- Windows 10 32/64 bits
- Linux Stable Kernel Version (2.6.32.x to 5.x)
- Linux CentOS/RHEL (6.x to 7.x)
- Ubuntu (14.x to 16.x)
- UOS V20
- VMware ESX/ESXi 4.x/5.x/6.x

3. Hardware Installation

Step 1: Please turn off your PC.

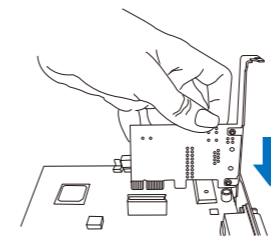


Step 2: Remove any metal decorations from your hands and wrists.

Step 3: Remove the cover from your PC.

Step 4: Locate an empty PCI Express slot and remove the corresponding back plate. Save the screw for use in Step 6.

Step 5: Carefully insert the 10 Gigabit Ethernet Adapter into the chosen slot and press firmly with proper push to ensure it is fully seated in the slot.



Step 6: Secure the 10 Gigabit Ethernet Adapter with the screw you saved in Step 4.

Step 7: Replace the PC cover.

Step 8: Power on your PC and refer to the next section to install driver.

4. Installation on Windows 10

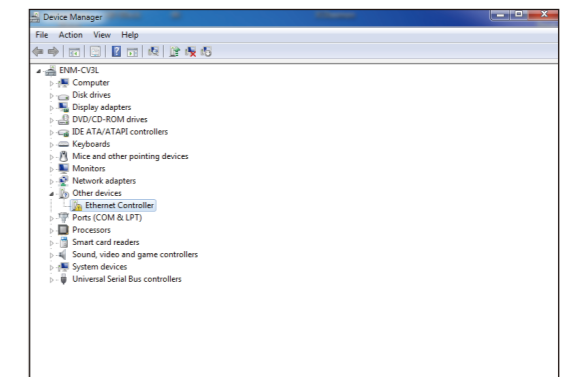
Before installing drivers of ENW-9801 server adapter, please visit PLANET ENW-9801 web pages to download the drivers for your operation system.

<https://www.planet.com.tw/en/support/downloads?&method=keyword&keyword=ENW-980&view=4#list>

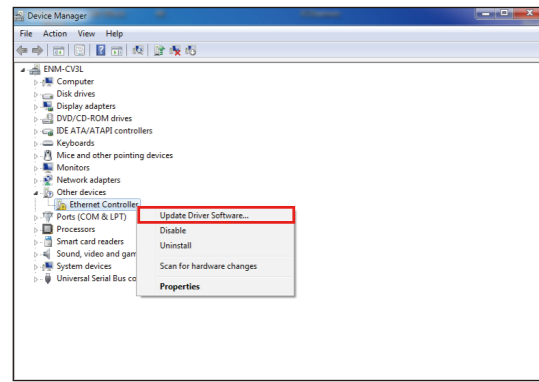


1. For window 10 and other windows-based operation system, the operation system will detect server adapter and install driver automatically. However, if driver is not installed successfully, you have to install driver manually.
2. This operation is under Win10 which it is similar to Win7/8/Windows Server 2008/Windows Server 2012/Windows Server 2016/Windows Server 2019.

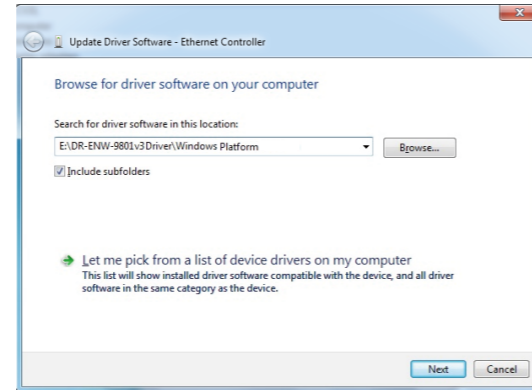
1. After installing the ENW-9801 to your PC and booting it up, Windows 10 will detect it and you have to install driver.



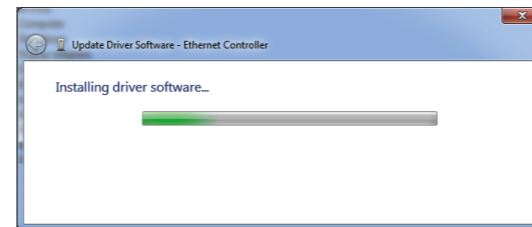
2. Please move and right-click the mouse button for Ethernet Controller item and select "Update Driver Software".



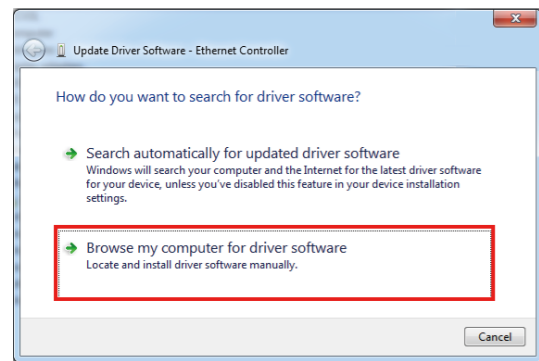
4. Please click "Browse" to specify the driver location to install. Click "Next" to continue.



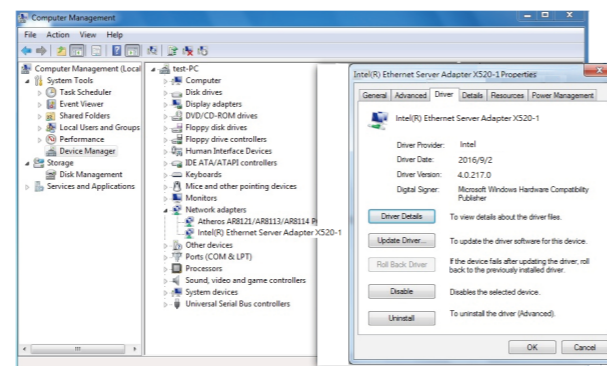
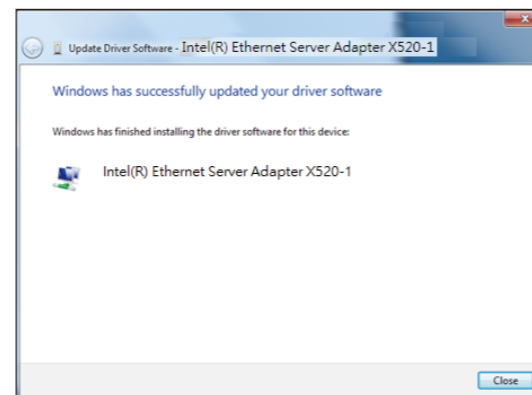
The driver is being installed.



3. Please select "Browse my computer for driver software" for the next step.



5. Click the "Close" button to complete the driver installation.



5. LED Indicators

LED	Color	Description
Link Speed	Green	It indicates the link is established at 10Gbps full duplex mode.
LNK/ACT	Green	When it lights, it indicates a functional network link through the port. When it blinks fast, it indicates data is transmitting and receiving through the port.

Customer Support

Thank you for purchasing PLANET products. You can browse our online FAQ resource and User's Manual on PLANET Web site first to check if it could solve your issue. If you need more support information, please contact PLANET switch support team.

PLANET online FAQs:
<http://www.planet.com.tw/en/support/faq>

Switch support team mail address:
support@planet.com.tw

ENW-9801v3 and ENW-9803v3 User's Manual:
<https://www.planet.com.tw/en/support/downloads?&method=keyword&keyword=ENW-980&view=3#list>

