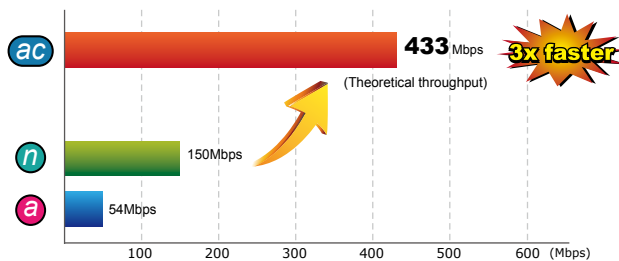


# 433Mbps Dual Band 802.11ac Wireless USB Adapter



## High-speed 802.11ac Wireless Experience

The WDL-U600AC offers a reliable and cost-effective wireless extended solution. It adopts the next-generation IEEE 802.11ac 5GHz standard with 1T1R antenna technology and is backward compatible with IEEE 802.11a and 802.11n. The WDL-U600AC supports USB 2.0 interface that integrates with transmitting and receiving data at one channel to enable the speed to go up to 433Mbps for both data upload and download when working with 11ac device.

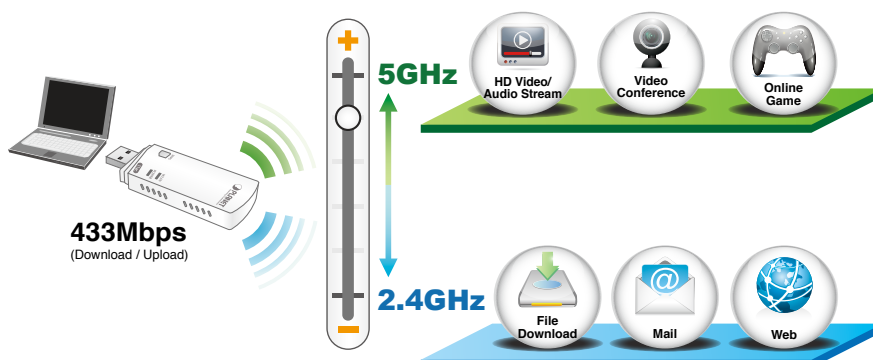


Maximum Speed: Next Generation 802.11ac vs. 802.11n

- 2.4GHz and 5GHz Dual Band wireless connectivity
- Complies with IEEE 802.11a/n/ac and IEEE 802.11b/g/n standard
- 5GHz band support to optimize HD video streaming and online gaming
- Built-in internal antennas with 1T1R MIMO technology
- Maximal speed up to 433Mbps upload and download at 5GHz frequency band
- USB 2.0 / 1.1 attached interface
- Supports Software AP mode and Universal Repeater mode at Win7/8 operating system
- Supports WEP 64/128-bit, WPA, WPA-PSK, WPA2, WPA2-PSK (TKIP/AES encryption)
- Wi-Fi Protected Setup (WPS) support
- User-friendly GUI wireless configuration utility
- Easy to install using the multi-language setup wizard
- Windows XP, Win7, Win 8, Linux, and MAC OS X ready
- Low Power usage with Advanced Power Management

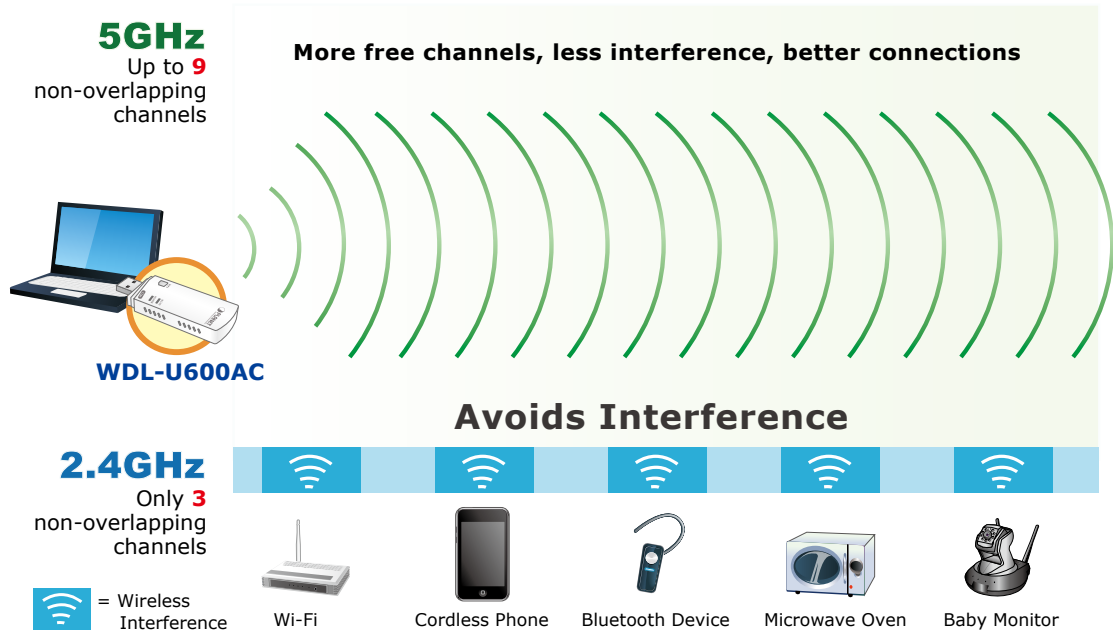
## 2.4G and 5G Dual Band Wireless Connectivity

The WDL-U600AC is a cost-effective, highly-integrated USB Wireless Adapter adopting the dual band technology that supports 2.4GHz or 5GHz wireless signals on a Wireless Adapter. It fully complies with 802.11a/b/g/n/ac specifications, providing feature-rich wireless connectivity at high standards, and delivering reliable throughput from an extended distance. Its optimized RF architecture and baseband algorithms provide superb performance with low power consumption. The WDL-U600AC Wireless USB Adapter is designed to support standard based features in the areas of security, quality of service and international regulation, giving end users the greatest performance anytime in any circumstance.



**Benefits of High-speed 5GHz Signal**

Since there are more and more wireless applications and electric devices using the radio frequency of 2.4GHz, the wireless channel of 2.4GHz has been already too crowded for clients to enjoy the high-speed wireless connection. In order to avoid the wireless interference between each other, the WDL-U600AC provides users with the radio frequency of 5GHz for watching HD videos or playing online games additionally. This function makes the WDL-U600AC more suitable for multimedia applications requiring wider bandwidth.

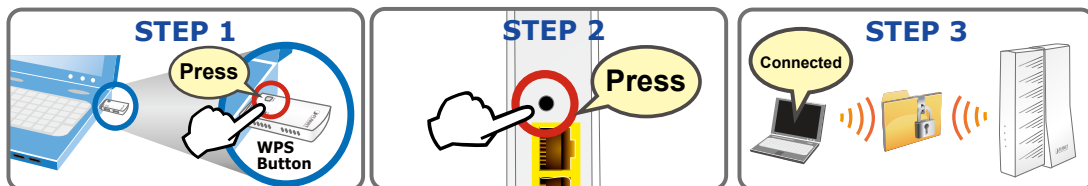


\*The 24 channels are defined by the theory. The actual application will vary based on the regulation in different regions and countries.

**Advanced Wireless Security**

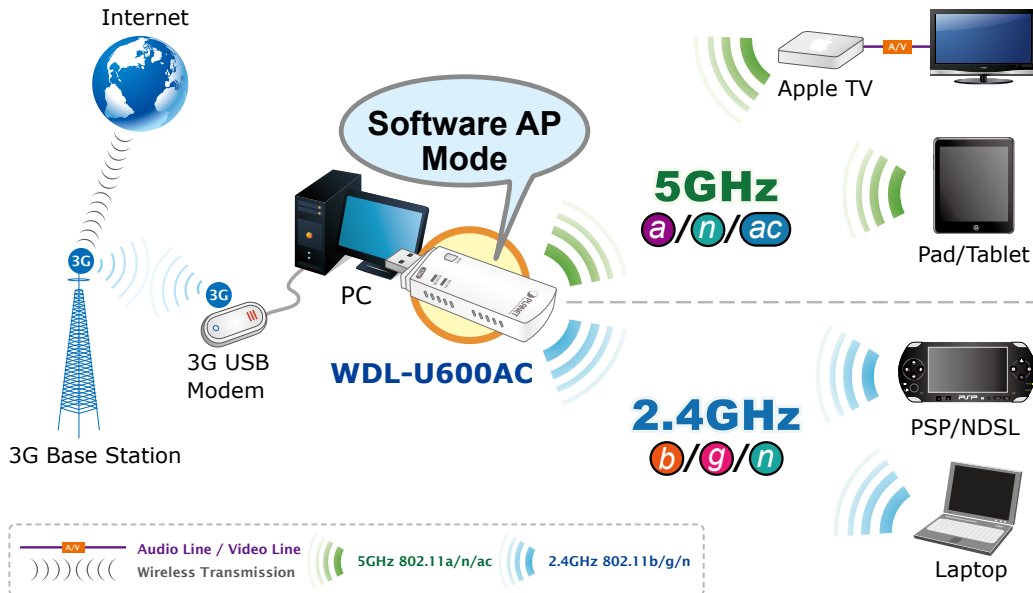
The WDL-U600AC provides advanced security features including 64/128-bit WEP, WPA / WPA2 and WPA-PSK / WPA2-PSK with TKIP/AES encryption. Furthermore, in order to simplify the security configurations, WPS (Wi-Fi Protected Setup) function is included to offer a convenient and fast connection method for users as well.

**WPS (Wi-Fi Protected Setup)**  
Quick & Easy Wireless Connection



*Software Access Point Function for Wireless Connection Sharing*

More than just being an adapter for PC and laptop connecting to high speed wireless network, the WDL-U600AC can also become a wireless access point. By applying the USB Wireless LAN Utility included in the package, users can switch the WDL-U600AC operation mode between Station mode and Access Point mode. When the WDL-U600AC is in the Access Point mode, it turns to a Wi-Fi Hotspot. The Wi-Fi supported devices such as iPhone / Android / Windows Phone / iPad / NDS / PSP can connect to it and share the wireless access easily. Therefore, travelers would then be worry free to connect to Internet wirelessly via the WDL-U600AC when there is only wired Internet available anywhere.



## Applications

*Flexible Dual Band Wi-Fi Connection*

By simply inserting the WDL-U600AC 11ac Wireless USB Adapter into your PC, MAC or laptop, you can easily connect to 2.4GHz or 5GHz wireless network with up to 433Mbps high-speed transmission and stable wireless quality. To avoid signal interference and ensure the best Wi-Fi performance, the WDL-U600AC delivers the Dual Band technology to provide users with flexible options to connect to the wireless network with either 2.4GHz or 5GHz frequency band. Users can check e-mail, surf the Internet and transmit data via the 2.4GHz band; on the other hand, watching High-Definition (HD) video or playing on-line gaming via the 5GHz band. With outstanding stable high-speed wireless transmission, the WDL-U600AC can provide users with excellent multimedia streaming.



*Easy and User-friendly Installation*

The WDL-U600AC is a perfect choice for wireless connectivity. It takes advantage of flexibility and convenience of USB2.0 interface, and offers full mobility and high availability by means of easy installation and true "Plug & Play" operation.

## Specifications

Model	WDL-U600AC
<b>Hardware Specifications</b>	
Interface	USB 2.0, Type-A
Antenna Type	Internal antenna
LED (Green Color)	1 x Link / Active 1 x Power
Operation Voltage	5V DC, power input from USB port
Dimensions (W x D x H)	81x 25.5 x 11 mm with USB cap 72 x 25.5 x 11 mm without USB cap
<b>Wireless Specifications</b>	
Standards Conformance	IEEE 802.11ac standard compliant IEEE 802.11b/g/n backwards compatible IEEE 802.11a/n backwards compatible
RF Modulation	PSK/CCK, DQPSK, DBPSK, OFDM
Frequency Band	2.412 - 2.484 GHz 5.180 - 5.240 GHz 5.745 - 5.825 GHz
Data Rate	802.11a: 54, 48, 36, 24, 18, 12, 9 and 6Mbps 802.11b: 11, 5.5, 2 and 1 Mbps with auto-rate fall back 802.11g: 54, 48, 36, 24, 18, 12, 9 and 6Mbps 802.11n (20MHz): up to 72Mbps 802.11n (40MHz): up to 150Mbps 802.11ac (80MHz): up to 433Mbps
Operating Mode	<ul style="list-style-type: none"> <li>■ Ad-Hoc / Infrastructure</li> <li>■ Soft AP</li> <li>■ Universal Repeater (Win7/8)</li> </ul>
Encryption Security	WEP 64/128-bit WPA / WPA2 (TKIP/AES) WPA-PSK / WPA2-PSK (TKIP/AES)
Wireless Advanced Management	Supports Software WPS (Wi-Fi Protected Setup) The utility included in the package or WLAN AutoConfig utility
Operating Systems	Windows 2000/XP (x86/x64) / VISTA (x86/x64) / Win7 (x86/x64) / Win8 (x86/x64) Linux Kernel 2.4 Macintosh 10.7/10.8/10.9
<b>Certification</b>	
Emission	LVD
<b>Environment</b>	
Operating Temperature	0 ~ 40 degrees C (32 ~ 104 degrees F)
Humidity	10 ~ 90%, non condensing
<b>Package</b>	
Package Contents	<ul style="list-style-type: none"> <li>■ WDL-U600AC (802.11AC Dual Band Wireless USB Adapter)</li> <li>■ Quick Installation Guide</li> <li>■ CD (including driver, utility and user's manual)</li> </ul>

## Ordering Information

WDL-U600AC	433Mbps Dual Band 802.11ac Wireless USB Adapter
------------	---

## Related Products

WDRT-750AC	750Mbps 802.11ac Wireless Broadband Router
WDAP-C7200AC	1200Mbps 802.11ac Dual Band Ceiling Mount Wireless Access Point

### PLANET Technology Corporation

11F., No.96, Minquan Rd., Xindian Dist., New Taipei City  
231, Taiwan (R.O.C.)  
Tel: 886-2-2219-9518 Fax: 886-2-2219-9528  
Email: sales@planet.com.tw www.planet.com.tw



PLANET reserves the right to change specifications without prior notice. All brand names and trademarks are property of their respective owners. Copyright © 2014 PLANET Technology Corp. All rights reserved.

WDL-U600AC