

PROFIBUS®-PA, Feed Through Connectors

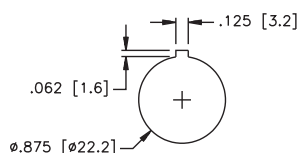
- Receptacles Provide Transition from Male to Female Connectors
- Available for Bulkhead and Feed Through Applications



Housing	Part Number	Features	Pinouts
	RSFV RKFV 48/22	Nickel plated CuZn or stainless steel, 300 V, 9 A, -40° to +75°C, straight male/female feed through, for use with DeviceNet <i>minifast</i> cordsets	<div> Male </div> <div> Female </div>
	FKV FSV 48/M12	Nickel plated CuZn or stainless steel, 250 V, 4 A, -40° to +75°C, straight male/female connector, for pre-molded <i>eurofast</i> cables	<div> Male </div> <div> Female </div>

Standard housing material is nickel plated brass. "RSF RKF.."; "RSFV RKFV.." indicates stainless steel housing.

Panel Cutout
RSFV RKFV 48/22



Panel Cutout
FKV FSV 48/M12

